



21 Bishop Street

Skye

South Australia 5072

Tel/Fax: (08) 8331 9229

International Tel/Fax: + 61 8 8331 9229

Mobile: +418 815 400

Kodara Pty. Ltd. Trading as Fitness Technology A.B.N. 31 056 594 248

Web Site [www.fittech.com.au](http://www.fittech.com.au)

Email [info@fittech.com.au](mailto:info@fittech.com.au)

## Introducing the new generation 2007 Kinematic Measurement System software

### **Option A for all KMS Fitness Technology customers with either XPV6 or the XPV6+**

USB Data Acquisition Interface as shown in the below RHS photo

- Download & is available free from our web page  
<http://www.fittech.com.au/products/kms.asp>

New KMS 2007 software version download has the following new features:

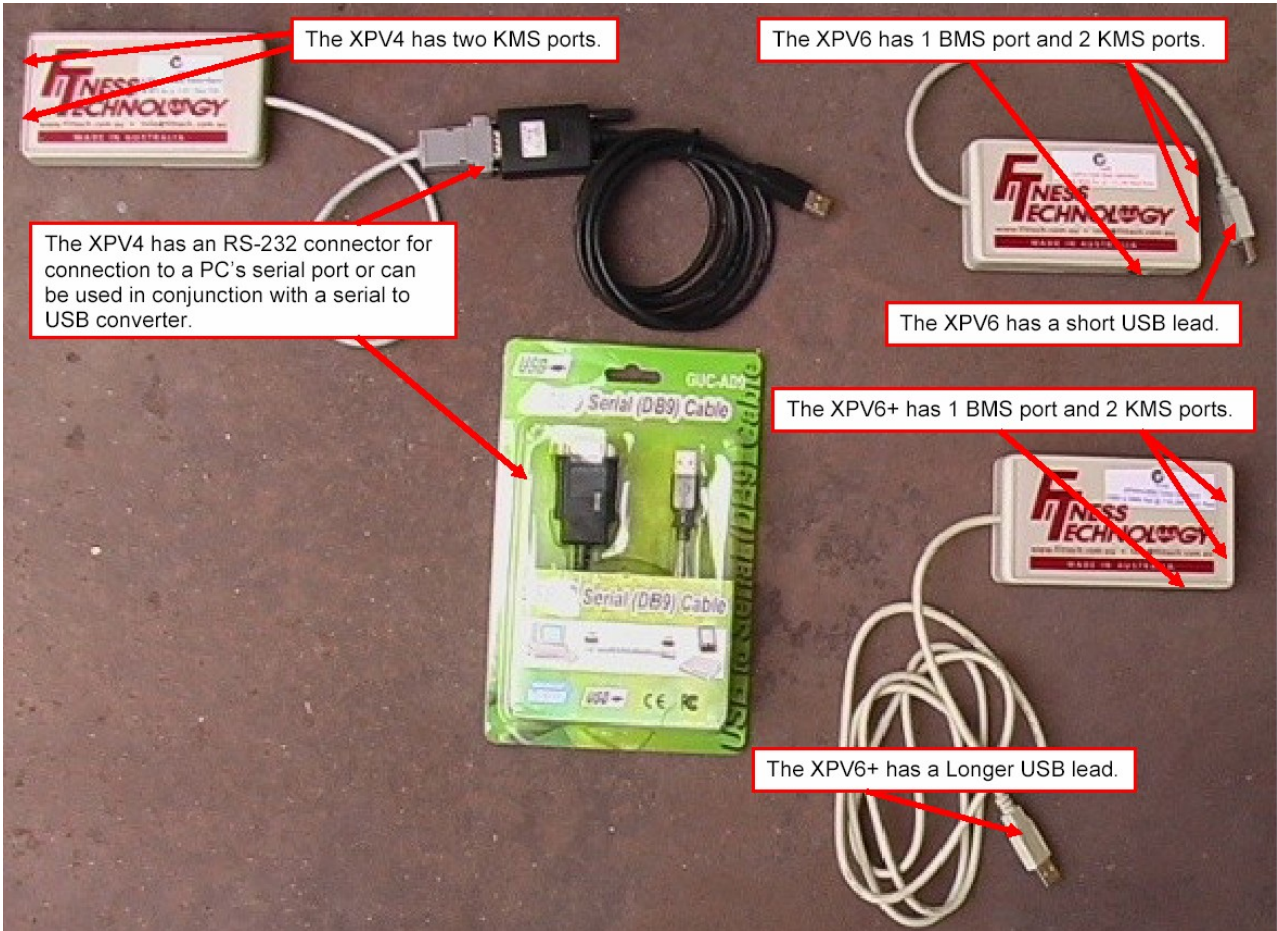
- Auto installs the generation Drivers with new USB 2.0 high data streaming capacity (no more Hardware Wizard steps to follow.)
- These Drivers provide very high speed millisecond timing resolution specifically improving the data saved in many areas with specific relevance the next 4 KMS tests
- Improved Balance & Stability test data presentation – for core stability assessment
- Improved First Step Quickness tests data presentation – for reaction & shuffle speed assessment
- Improved Multiple Jump tests presentation – Power, fatigue assessment etc.
- Improved Contact Time data – Power, fatigue assessment etc. +
- Improved Auto Save to Excel format on all tests for later analysis
- New KMS software auto detects the correct COM Port & Baud Rate settings (no more Control Panel\System\Device Manager process to find the assigned COM Port No.)
- Download now auto installs over the top of the previous KMS version – ready to use (no more uninstalling of the previous KMS version)

### **Option B for all KMS Fitness Technology customers with either XPV3 or the XPV4+**

RS232 Data Acquisition Interface as shown in the below LHS photo

All these KMS customers they can either:

1. Stay with their current KMS software or.....
2. Contact Fitness Technology re a special discounted trade up option to our XPV6+ Data Acquisition Interface
3. Hence the XPV3 & the later XPV4 (shown below) was designed in the mid1990's when PC manufacturers stopped making unit with a Parallel Printer Port that the KMS had required.
4. In the early 2000's they phased out - RS232 Serial Port & customers then required a USB to Serial Converter to operate but even that adaptation is old USB 1.0 technology.
5. Hence it became impossible to continue to improve the KMS software to its full potential by holding back new KMS developments because of this hardware restriction.
6. All the other KMS hardware supplied is all forward compatible.
7. Microsoft has moved on past W95 & W98 technology & so have most laptop manufacturers.



The XPV4 has two KMS ports.

The XPV6 has 1 BMS port and 2 KMS ports.

The XPV4 has an RS-232 connector for connection to a PC's serial port or can be used in conjunction with a serial to USB converter.

The XPV6 has a short USB lead.

The XPV6+ has 1 BMS port and 2 KMS ports.

The XPV6+ has a Longer USB lead.