

# How to prevent Microsoft XP, Vista & Windows 7 & 8.1 programs from going into Power saving mode (which can switch off the USB Ports in use)

---

## Contents

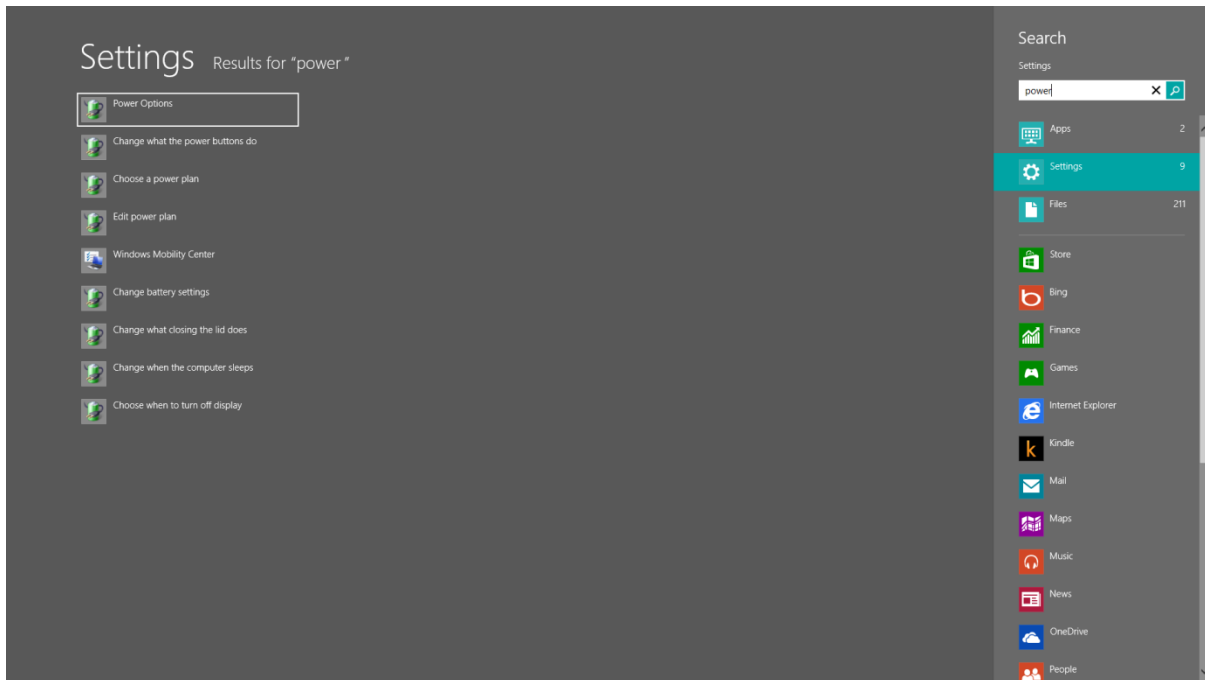
Windows 8.1 Settings .....	2
Windows VISTA /Windows 7 Settings.....	3
Windows XP Settings .....	6

These are all related to **power management settings** that are **NOT** set to **NEVER** on all settings and the 'USB selective Suspend' settings under advanced power options not being disabled.

Either of these settings could cause the PC to shut down the USB ports and loose connection with the XPV7 or XPV6+ interfaces.

## Windows 8.1 Settings

In windows 8.1 hold down the **windows key** and press the **W key** this will open the search settings window. Type **power** in the search window then click settings icon. The **power options shortcut** will appear on the left of screen.



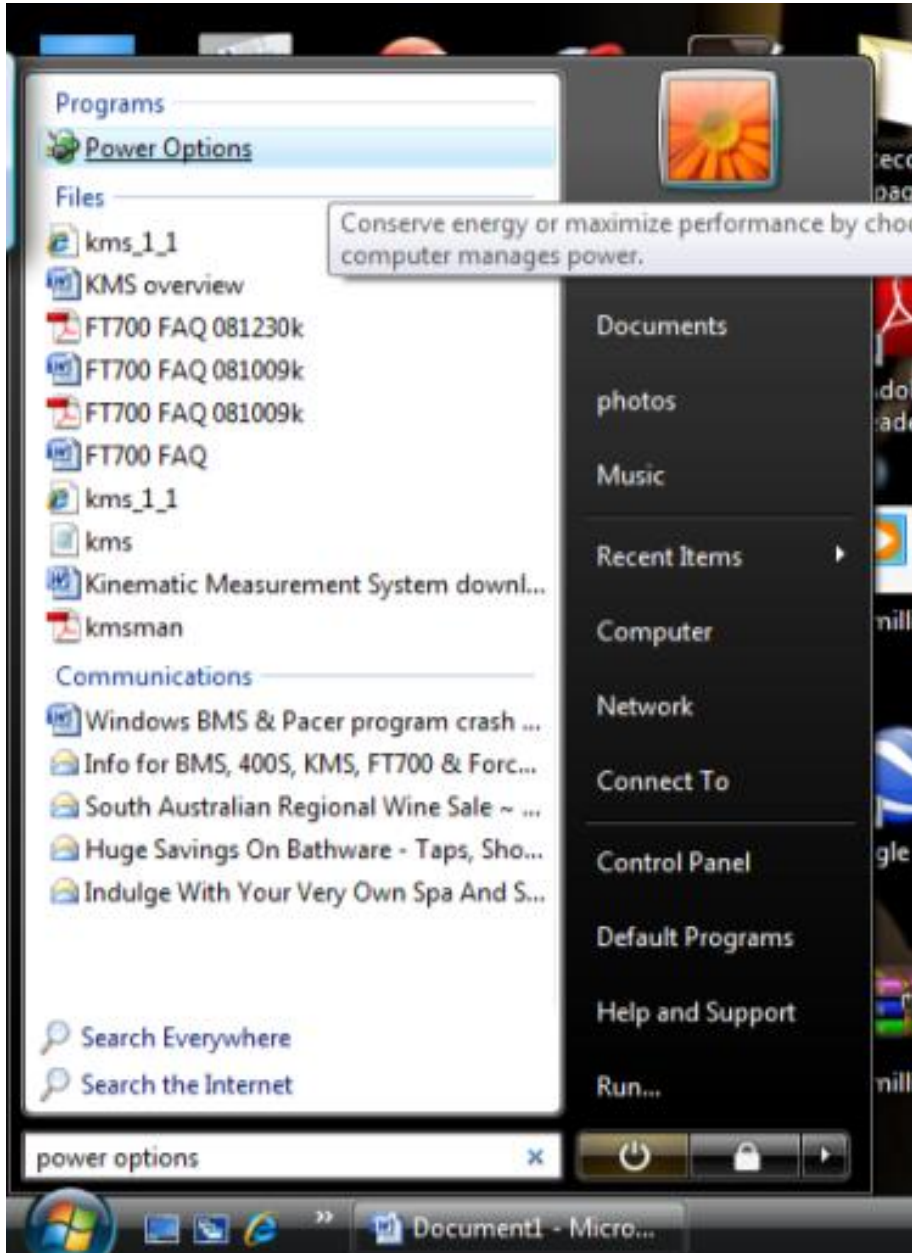
Click on **power options**. This will open the **power options window**.

Follow the steps outlined in windows vista and windows 7 (Page 4 of this document) instruction for the correct power settings.

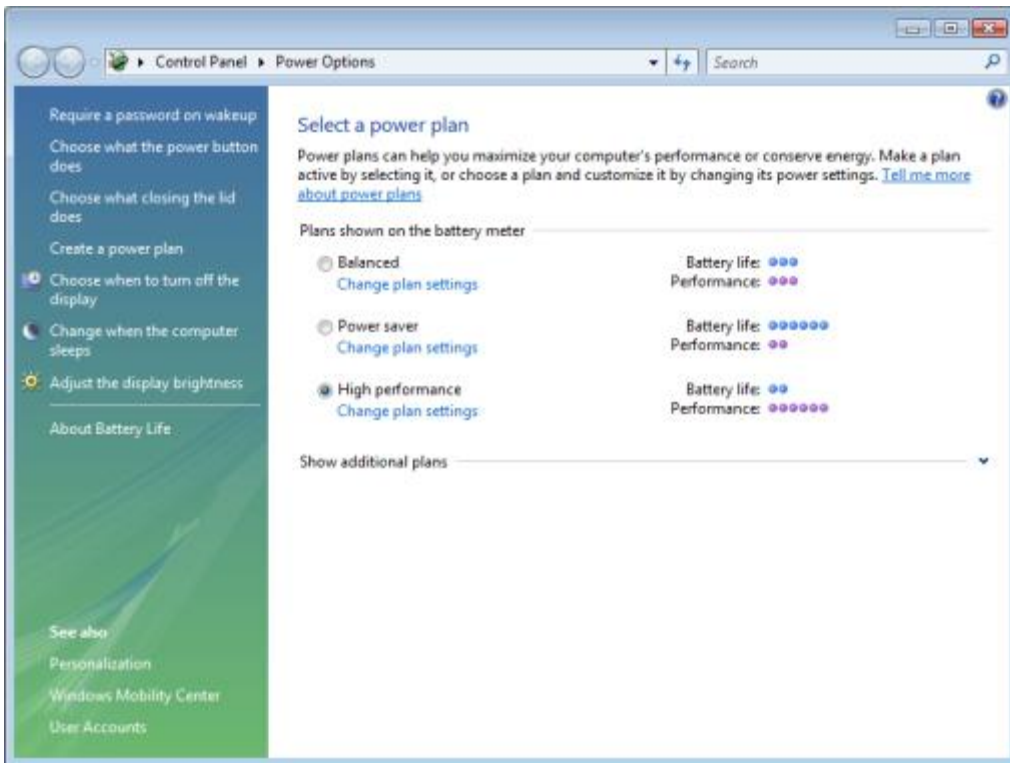
## Windows VISTA /Windows 7 Settings

To prevent this possibility in WINDOWS VISTA/WINDOWS 7 OS go to **Start Icon – ‘Search programs & files’** window and type in **Power Options** (see below).

Click on **Power options** listed under Programs

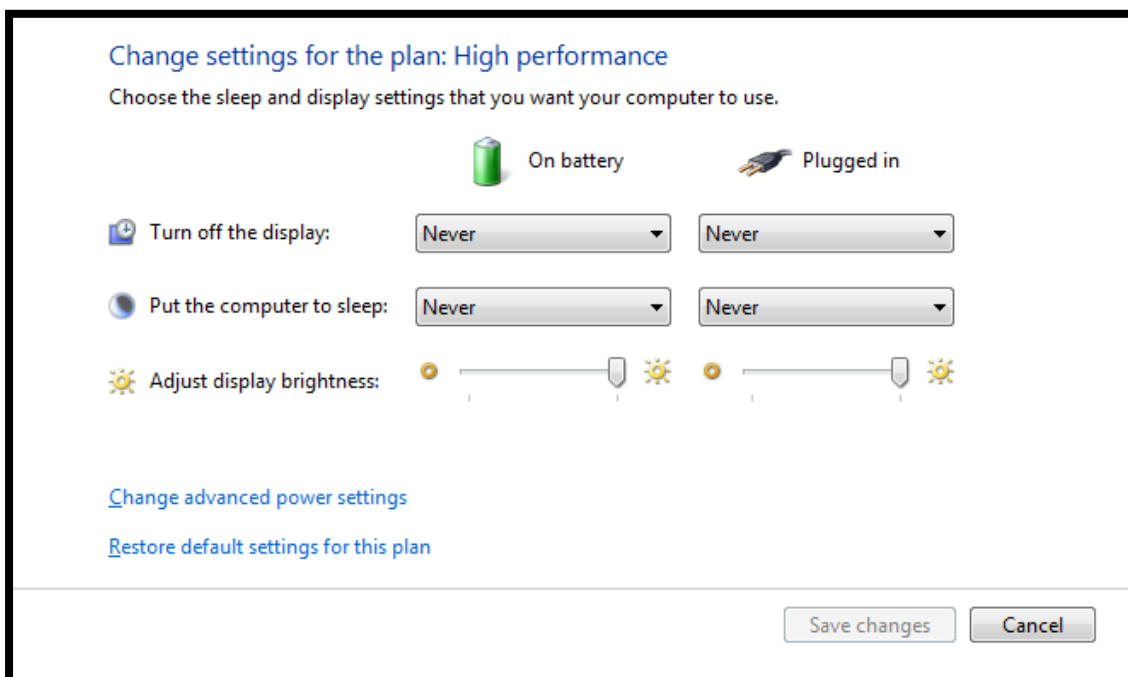


In Windows Vista, Windows 7 and Windows 8.1 you will have to click on 'change plan settings' in the window shown below.

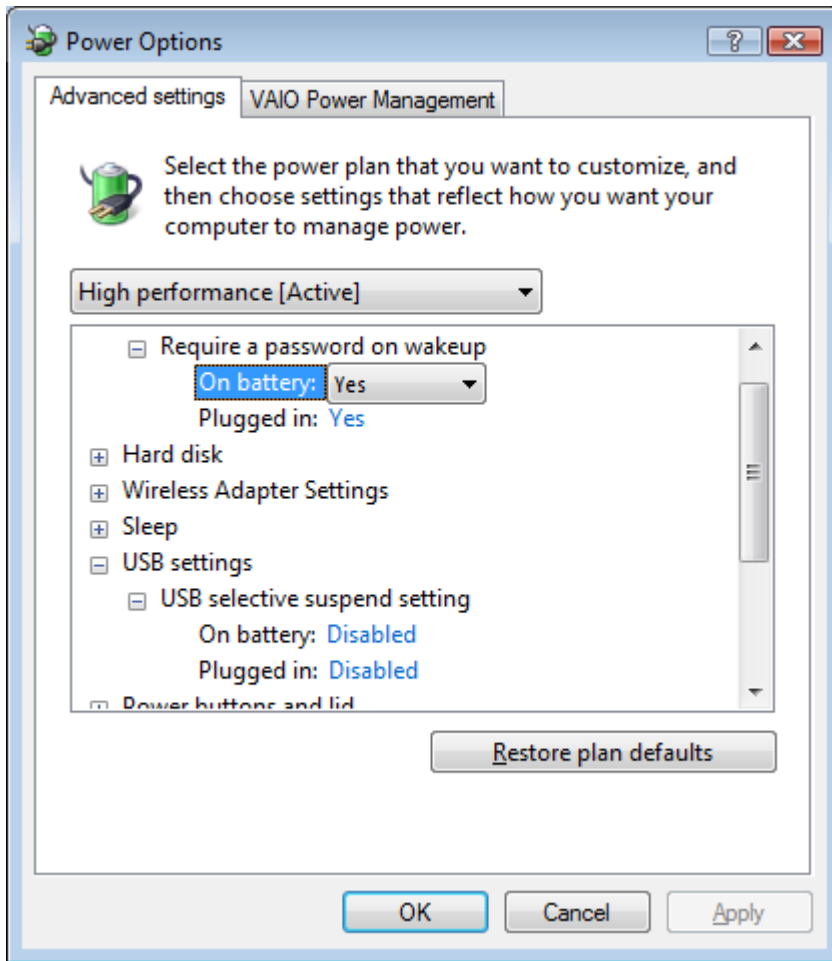


This will open up the same window that automatically shows in Windows VISTA, 7 and 8 (See below).

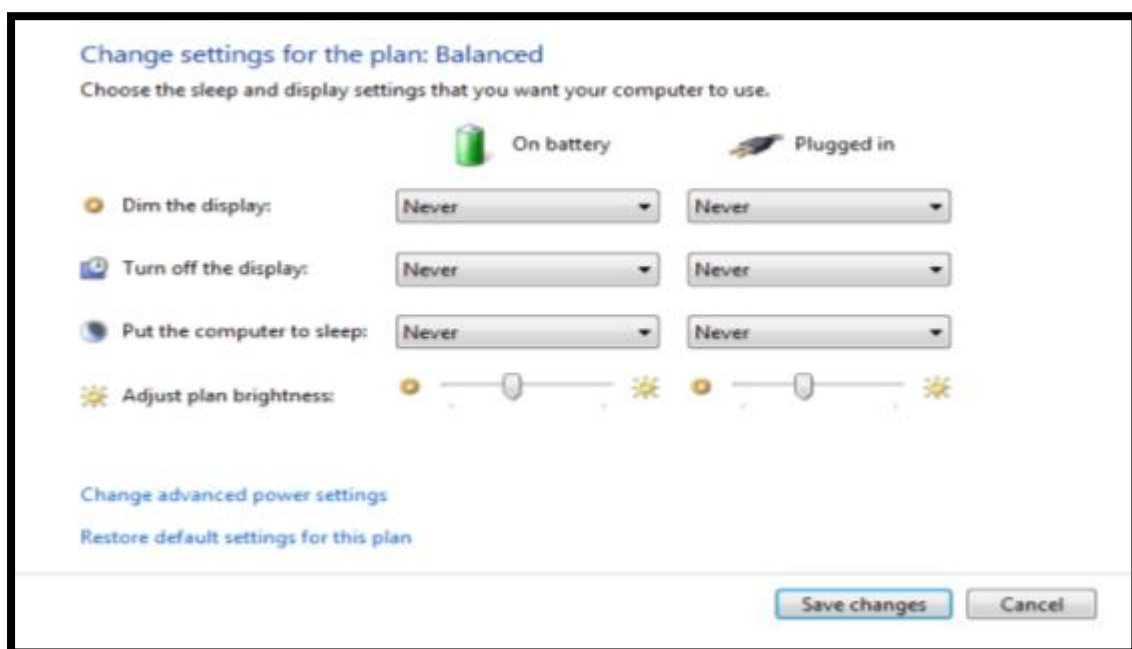
Then set all laptops & PC units as per the below screen grab & make sure all your Power Options settings stay set with the '**NEVER**'. Now click on '**Change advanced power settings**'.



Expand **'USB Settings'/'USB selective suspend settings'** (see below) and **disable** both these options. Then click on OK.



Then click the **'Save Changes'** button.

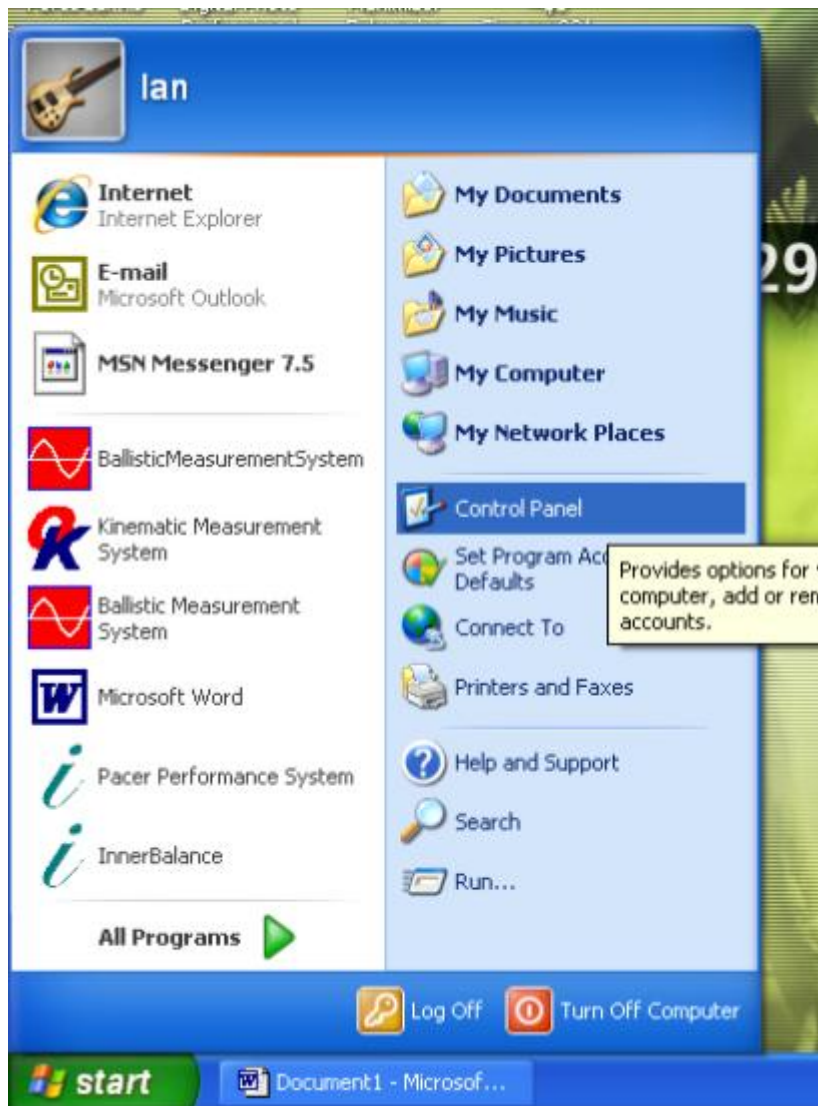


**Note:** Check these settings after doing auto Windows internet upgrades. This can default all the below settings back their normal default power option settings. Therefore all BMS & Pacer software users MUST go back & make sure that discussed settings are still set.

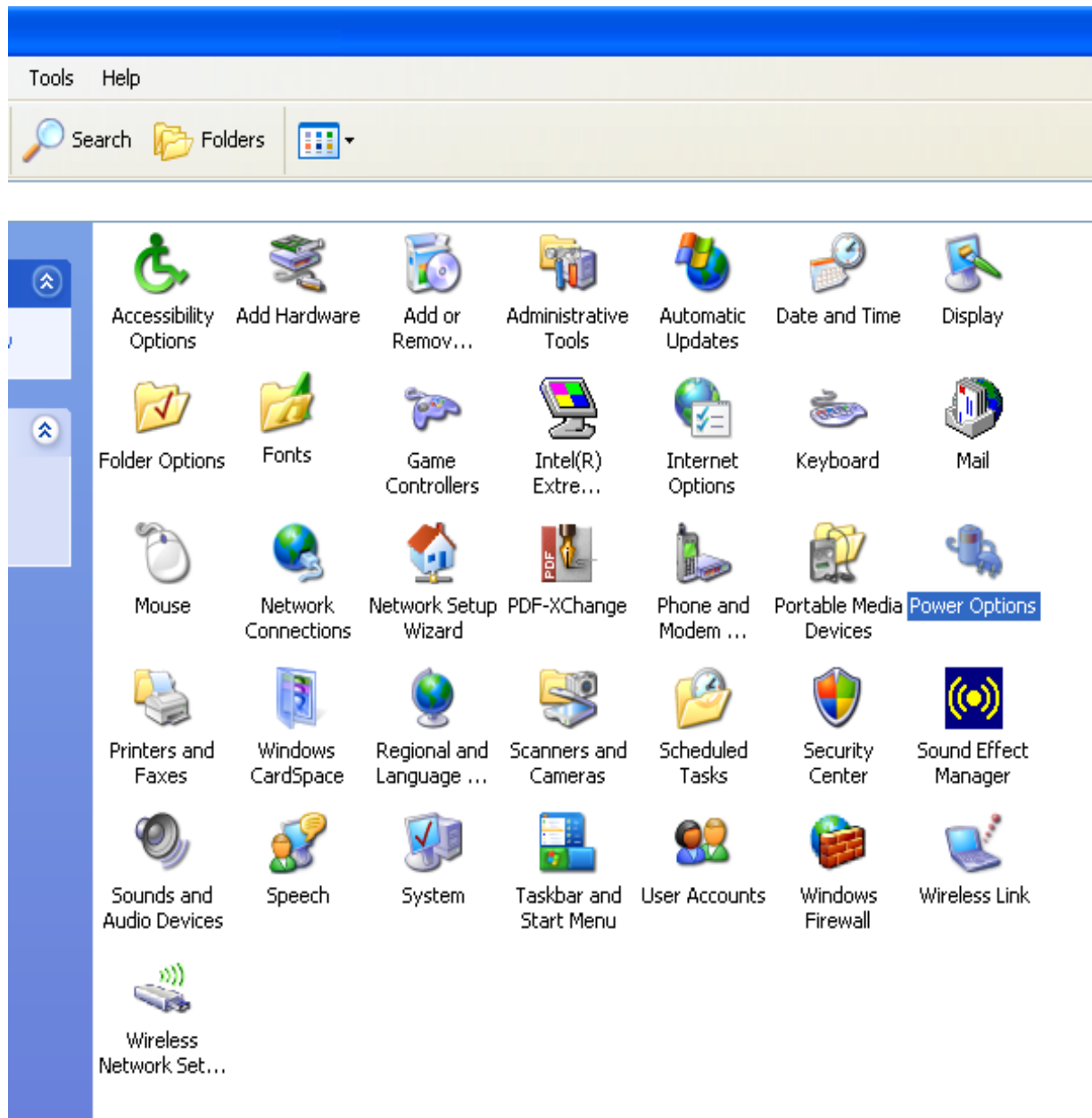
Also make sure that all BMS & Pacer customers' use their Power Supply Unit for every test session – this eradicates the possibility of the USB in use closing down due to Voltage on the laptop battery running down too low.

## Windows XP Settings

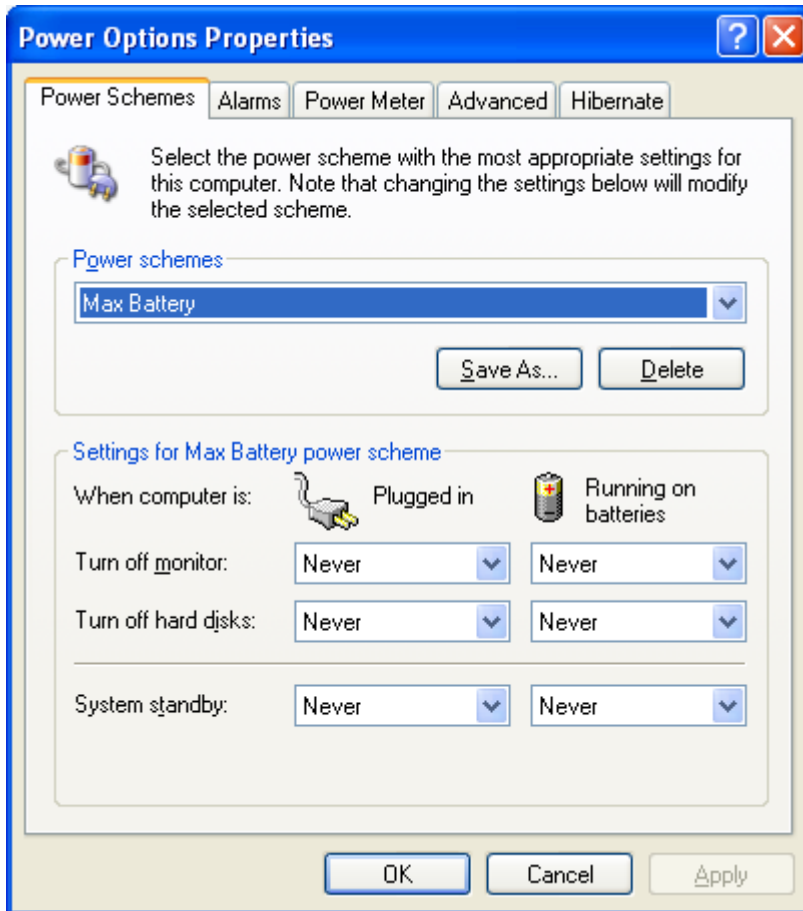
To prevent this possibility in WINDOWS XP Go to **Start/ Control Panel** (see below).



The Following window will open. Double click '**Power Options**'.



The following window will open



Then set all laptops & PC units as per the below screen grab & make sure all your Power Options settings stay set with the **'NEVER'** setting on all options. Then click the **'Apply'** button.

**Note:** Check these settings after doing auto Windows internet upgrades. This can default all the below settings back their normal default power option settings. Therefore all BMS & Pacer software users MUST go back & make sure that discussed settings are still set.

Also make sure that all BMS & Pacer customers' use their Power Supply Unit for every test session – this eradicates the possibility of the USB in use closing down due to Voltage on the laptop battery running down too low.